

SEPTEMBER | OCTOBER | NOVEMBER 2016

# BACKSTAGEPASS

BEHIND THE SCENES AT RIVERSIDE THEATRE



**MEET THE  
TREE AMIGOS**

PAGE 12

**MEET  
THE DIRECTOR  
RING OF FIRE**

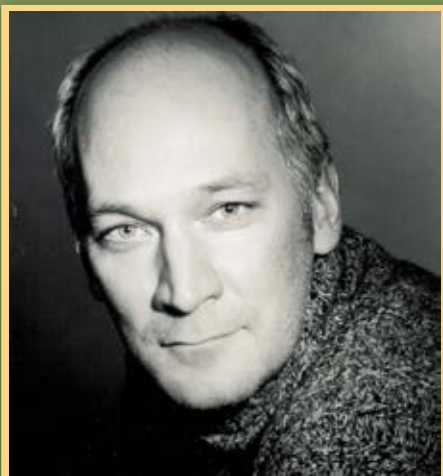
PAGE 4

**STUDENT SERIES  
THE WITCHES**

PAGE 20

# The Annual Friends Fall Luncheon

FEATURING



AN AFTERNOON WITH  
WORLD  
RENOWNED  
STAR OF THEATRE & OPERA

**DAVID  
PITTSINGER**

NOVEMBER 15, 2016  
Registration at 11:30am  
Lunch promptly at Noon  
*THIS EVENT SELLS OUT QUICKLY*

## FRIENDS FALL LUNCHEON COMMITTEE

BARBARA STOCKTON, EVENT CHAIR    EMILY SHERWOOD, COMMITTEE CHAIR  
JULIE BURCHFIELD    MARY GRANDY    RUTHIE McNALLY  
PATTI GAEDE    SUSAN JOHNSON    GRACE SKRZYPCZAK  
JUDY GOW    NANCY KNAPP    SALLY TOFFEY

**DUE TO POPULAR DEMAND**

**2 ADDITIONAL EVENING PERFORMANCES**

**NOVEMBER 15 & 17  
AT 7:30PM**

DIRECTED BY  
ALLEN D. CORNELL  
ARRANGED & MUSICAL DIRECTION BY  
KEN CLIFTON



SEPT | OCT | NOV 2016 Issue

**PRODUCING ARTISTIC  
DIRECTOR/CEO**  
Allen D. Cornell

**MANAGING DIRECTOR/COO**  
Jon R. Moses

**MARKETING DIRECTOR**  
Oscar Sales, Jr.

**MEDIA ART DIRECTOR**  
Garrett Schiefer

**GRAPHIC ARTIST**  
Holly S. Porch

**CONTRIBUTORS**  
Alice Johnson

**COVER PHOTO CREDIT**  
Holly S. Porch

**PUBLISHED BY**  
Riverside Theatre  
3250 Riverside Park Drive  
Vero Beach, Florida 32963  
(772) 231-5860

©2016 Riverside Theatre's BACKSTAGE PASS  
All rights reserved. No part of this publication  
may be reproduced without the expressed  
written permission of Riverside Theatre. Neither  
advertiser nor publisher will be held accountable  
for errors, omissions or accuracy of statements,  
nor does the publisher accept liability.

See more behind the  
scenes on...



www.RiversideTheatre.com

Premiere of HOWL AT THE  
MOON EXPERIENCE,  
2016



## Thank You 2016-2017 PRESENTING SPONSORS

MARILYN & JOHN McCONNELL **RING OF FIRE**  
LAURA & BILL FRICK **CHICAGO**  
BOBBIE OLSEN **PRIVATE LIVES**  
O'HAIRE FESSLER GROUP-MERRILL LYNCH WEALTH  
MANAGEMENT **MAME**  
LINDA & MEL TEETZ **SATURDAY NIGHT FEVER**

## Thank You 2016-2017 SEASON SPONSORS



## Thank You 2016-2017 STAR PARTNERS





A CONVERSATION WITH  
DIRECTOR/PERFORMER  
**JASON EDWARDS**

**From the songbook of iconic artist Johnny Cash comes this crowd-pleasin', foot-stompin' musical celebration that tells a fascinating story of love and faith, struggle and success, rowdiness and redemption, and home and family. With more than two dozen classic Cash hits – "I Walk The Line," "A Boy Named Sue," "Folsom Prison Blues," "Ring of Fire" and many more – a multi-talented cast, create a unique portrait of an American music legend. Though never impersonated, Cash's remarkable story is told in an exhilarating and moving stage production.**

**RING  
OF FIRE**  
THE MUSIC OF JOHNNY CASH



**Can you describe Ring of Fire?**

*Ring of Fire* is a collection of Johnny Cash's enormous catalog and variety of songs. It is a musical that celebrates the life of a true American legend. And, it is the only theatrical show he ever gave his approval for and endorsed. William Meade and Richard Maltby's concept was never to have someone impersonate Mr. Cash, but to get underneath his image and present what he was trying to say in his lyrics. The show, in essence, gets past his larger than life image.

**While a majority of people will know some of Johnny Cash's songs, do you have to be an aficionado to enjoy the show?**

Absolutely not! The genius of Mr. Cash was that he wrote songs people could relate to.

He wrote songs about the everyday man; songs about the issues and experiences he dealt with; songs that gave voice to so many overlooked and forgotten people in the world. Mr. Maltby is a brilliant writer and creator who didn't shy away from the patriotic side or the spiritual side of Johnny Cash. Plus, it showcases a great love story between Johnny and June Carter Cash.

**What makes Mr. Cash's music so universally appealing?**

He has a really unique and original sound and whether you've heard every song he wrote or haven't heard any at all, audiences will be moved by the power and delicacy of each lyric. He wrote about what he knew. He had things in his heart and soul to tell, and boy, he sure told them well. If I had to sum up what Mr. Cash was about, I'd say just read the lyrics to "Man in Black."

*Contd. on the next pg*

Music and Lyrics by Johnny Cash  
Created by Richard Maltby, Jr.  
Conceived by William Meade

HIS MUSIC. HIS LIFE.  
A TRIBUTE TO THE LEGENDARY MAN IN BLACK.

PRESENTING SPONSOR JOHN & MARILYN MCCONNELL  
**OCT 25 - NOV 13**

**Since no one is doing an impersonation of Johnny Cash on stage, how do you tell his story?**

No one can truly capture the real Johnny or June Carter. The players and musicians play them at various times, with nobody individually impersonating either one. We're trying to honor him, honor his music, honor what he was trying to say, do it in his words and convey that to the audience. Richard Maltby's original concept was to get past the image of this music legend standing on stage singing songs about trains and prisons and really dig into the words of his songs, which are really poetic. He's been called 'The Hillbilly Shakespeare'.

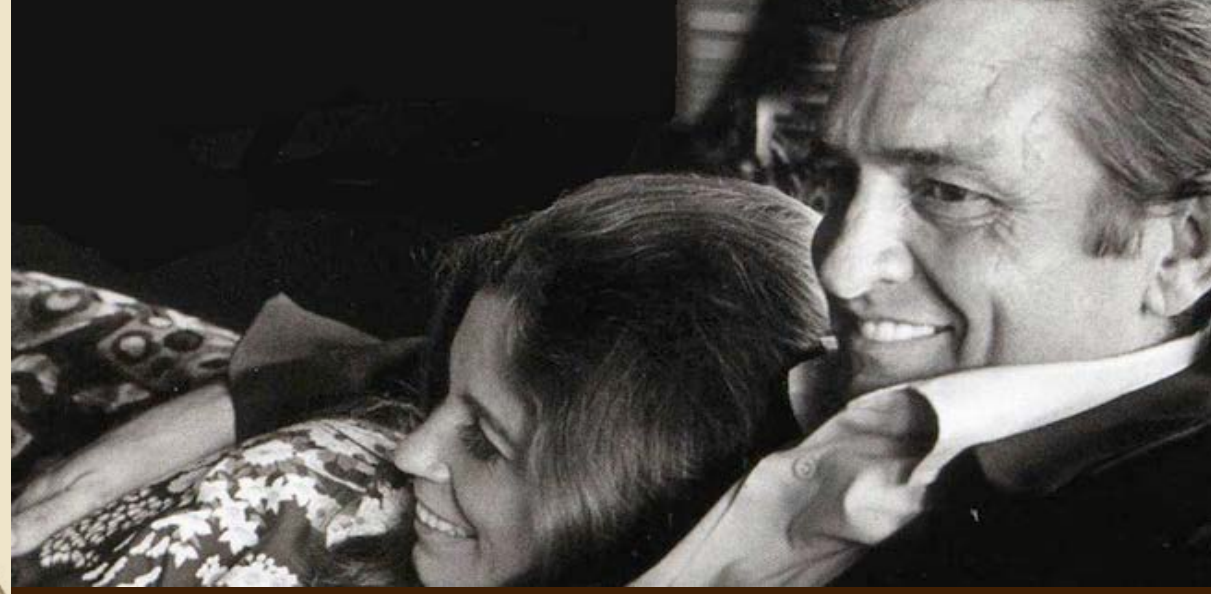
**This production is slightly different than the one that played on Broadway, in which you starred. What changes have been made?**

The original concept has not changed, but we've restructured the script to showcase more of the traditional Sun Studio Johnny Cash sound and not so much on the trappings. The cast is now comprised of 10 people – four principle singers and six musicians.

**You've performed in and directed productions of Ring of Fire across the country, what can Riverside Theatre audiences expect?**

The excitement of tremendous storytelling. It's the story of a young boy growing up on a farm in the Depression Era who fulfilled his dream of becoming a recording artist. The show tries to touch on every aspect of Mr. Cash's life – his youth, his faith, his struggles, and his triumphs. It's a journey everyone can relate to and be inspired by.

**JAMES EDWARDS  
IN ANOTHER PRODUCTION OF  
RING OF FIRE**



**What connects you to Johnny Cash's music?**

We are cut from the same cloth - Southern boys who grew up on farms, singing hymns in church, aspiring towards the same thing. When I was 13 years old, I had the chance to see him in concert. The power and passion of his songs moved me. There on stage was a music legend, but underneath that image and fame was a very patriotic American and deeply spiritual man. Throughout his life he never lost sight of who he was and where he came from.

**TO EXPLORE MORE ABOUT RING OF FIRE  
SIGN UP FOR OUR NEW**

**BACKSTAGE ACCESS**

WITH JIM VAN VALEN, DIRECTOR OF EDUCATION

**MEETS WEDNESDAYS 9:30AM - 12PM  
OCT 12, 19, 26, NOV 2**

**CALL 772-231-6990 FOR MORE INFORMATION**

**A LIFELONG LEARNING EXPERIENCE**



# OOM-PAH-PAH!



SEPT 9, 10, 23, 24  
OCT 7, 8, 21, 22

COME EXPERIENCE OUR OKTOBERFEST NIGHTS, on select Friday and Saturday Nights from 6:00pm to 9:30pm! Join us as we add a taste of Oktoberfest to our grill, bar, and music. Draft beer served in steins, pretzel rolls, sausages. Popular Local Bands will jam on Friday nights and Oktoberfest Bands on Saturday nights.

Plus, help us fight hunger during our annual food drive, bring a non-perishable food item and take a spin at our prize wheel.



7:30 & 9:30PM  
COMEDY SHOWTIMES

FREE OUTSIDE CONCERTS 6-9:30PM



MUSIC!

BEER!

GERMAN STYLE FOOD!

WIN GREAT PRIZES!

GRILL & FULL BAR

COMEDY CLUB & BLOCK PARTY FUN!



NOV 11, 12  
DEC 2, 3, 9, 10, 16, 17

MAKE THIS THE HOLIDAY PLACE TO HANG-OUT with friends and family. Enjoy an abundance of cheer, lights and maybe even a little bit of snow, at our LIVE IN THE LOOP outside music venue, no ticket required. Great food, treats, and drink concoctions will be available for purchase. Our campus will be lit-up and Live Bands will rock-out with your favorite songs while mixing in some holiday classics to keep your holiday spirits high.

HOLIDAY MUSIC LIGHTS & ATMOSPHERE

FOOD, TREATS, & DRINKS!

GREAT FOR OFFICE PARTIES!

Contact the Special Events Coordinator for Office Party booking: 772-410-0470 or [annamarie.labella@riversidetheatre.com](mailto:annamarie.labella@riversidetheatre.com)

OPEN TO THE PUBLIC  
6-9:30PM,  
NO ADMISSION FEE  
LIVE MUSIC,  
TWO FULL BARS  
& FOOD SERVICE



Synthetic Ice Skating Rink for Kids!

Open During Live in the Loop DEC 2-17



Family Fun!

There will be a charge for Skating Rink Tickets.

# HOWL AT THE MOON EXPERIENCE

**A HIGH  
ENERGY  
MUSIC  
SHOW!**

**UNFORGETTABLE DUELING PIANOS  
7:30 & 9:30 SHOWTIMES**



**The FUN starts at 6:00pm in the LOOP**

**MORE THAN JUST DUELING PIANOS  
FULL BAR & FOOD**

Whether you're celebrating a special occasion or just want a fun night out, Howl at the Moon at Riverside Theatre is the perfect spot for you.

**SELECT WEEKENDS THROUGH OCTOBER**

*Recommended 18 & UP*



**FREE  
OUTDOOR CONCERTS**



**6:00-9:30PM**

**HANG-OUT, ROCK-OUT OR CHILL-OUT.**  
No ticket required to come out and enjoy the music. Every Comedy Zone and Howl at the Moon weekend, Riverside Theatre's driveway loop becomes the local hot spot where some of the area's most talented musicians perform. Each night a different music genre is featured... rock, island music, folk rock, blues, country, bluegrass, rockabilly and more! Plus if you want, enjoy a Comedy Show inside the theatre the same night by purchasing a 7:30pm or 9:30pm show ticket!



**Bar &  
Grill  
Open**

**View upcoming bands and concert dates online.**

<http://www.riversidetheatre.com/free-outside-concerts/>





# FESTIVAL OF TREES

# Expanded FULL CAMPUS



NANCY LARGE



LYN LAW



BARBARA WOODWARD

## MEET THE "TREE" AMIGOS

Riverside Theatre presents the 19th Annual Festival of Trees – one of the most anticipated community celebrations of the year. With a “Starry, Starry Night” theme, the entire Riverside campus will feature a glittering world of Christmas trees, holiday displays, Santa’s village, DIY demonstrations, and a NEW fun night of surprises for the whole family.

Chaired by the affectionately named “Tree Amigos” – Nancy Large, Lyn Law and Barbara Woodward, The Festival of Trees is Riverside Children’s Theatre’s largest benefit and supports children’s programming and scholarships.

“We couldn’t be more excited about this year’s Festival of Trees! ‘Starry, Starry Night’ is gearing up to be the biggest and the best, with the whole theatre campus involved,” says Lyn Law for the Tree Amigos. “This fun-filled event is not to be missed. There will even be a skating rink for the kids!”

Festivities begin on Friday evening, November 18, with the Festival Gala. Attendees welcome the holidays at this merry celebration featuring sumptuous food and drink, live entertainment and the grand event - the lighting of the Festival Forest.



**GENERAL ENTRY FEE**  
**\$10**  
**\$5**  
**KIDS UNDER 12**  
 Additional Ticket Required to Skate  
 Kids 10 & Under Only

## EVENT SCHEDULE

- GALA NIGHT**  
November 18  
6 - 10pm
- FESTIVAL SHOWCASE**  
November 19  
10am - 5pm
- NEW FAMILY NIGHT**  
November 19  
4 - 8pm
- FESTIVAL SHOWCASE**  
November 20  
10am - 5pm

### SPECIAL THANKS TO THE FESTIVAL COMMITTEE MEMBERS (Listed To Date)

- |                  |                     |                 |                  |                     |
|------------------|---------------------|-----------------|------------------|---------------------|
| Lyn Law          | Fay Estes           | Rossy Harper    | April Minton     | Cindy Schiefer      |
| Barbara Woodward | Shannan Estes       | Kelly Holm      | Mary Lou Robbins | Martha Ann Sloan    |
| Nancy Large      | Diane Fentress      | Carol Kanarek   | Judy Roberts     | Kelly Ward          |
| Kathie Althoff   | Mary Ann Garavaglia | Zo Anne Merrill | Barbara Russell  | Colleen & Don Wixon |



Riverside Children’s Theatre is transformed into a magical forest with over 50 beautifully decorated trees. Designers from all over the area volunteer their time, talent and treasure to create these unique, holiday masterpieces. Vendors selling holiday decor and much more are spread throughout the Forest. The gingerbread village, a magical mix of large and small creations, is always a focal point in the display area and completes any home holiday décor.



What would a holiday party be without Kris Kringle in attendance? This NEW outdoor area will feature music, performances, family activities, a synthetic skating rink, and Santa himself. Santa’s Village will also be the main location for Family Night where kids can enjoy crafts, cocoa, and twinkling decorations.



**FAMILY NIGHT SPONSOR**  
**GEORGE E. WARREN**

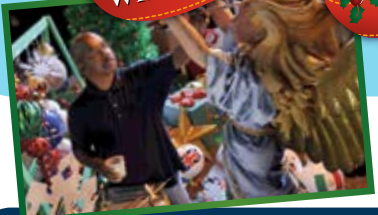


Riverside Theatre’s main building will be a hub of activity with the Hall of Wreaths, the Community Stage on the Waxlax Stage, with performances by local choirs, and classes and demonstrations of holiday projects by local artisans on the Stark Stage.



The ever-popular Christmas Shoppe is the one stop location for unique gifts, gourmet cheeses, jellies, and holiday cheer.





New this year, Winter Gardens will be an exclusive area showcasing holiday plants, outdoor decorations and a fun family photo area.



# Breakfast with Santa



**NOVEMBER 20**  
8:30 & 10:30AM

This annual treat for the whole family includes a visit with Ole St. Nick, musical performances, and a delectable breakfast provided by Disney's Vero Beach Resort.

# FESTIVAL OF TREES Preview Gala

**FRIDAY, NOVEMBER 18, 2016**  
TICKETS \$175 PER PERSON  
DOORS OPEN AT 6PM



SPECIAL PERFORMANCE OF  
**HOWL AT THE MOON EXPERIENCE**

Be the first to celebrate the festival and bid on the trees!

OPEN BAR • HEAVY HORS D'OEUVRES • FOOD STATIONS



Festival of Trees to benefit the Riverside Children's Theatre Program

**FESTIVAL MAP**

RIVERSIDE PARK DRIVE



Neurological treatment  
is within your reach.

### Dr. Dhadwal is now seeing patients in Vero Beach.



**Neetu Dhadwal, M.D.**  
Board-Certified  
Neurologist

If you're concerned about tremors, headaches, memory problems or any other kind of neurological issue, you can feel confident turning to Neetu Dhadwal, M.D. She will work closely with your primary care physician to provide personalized treatment.

Dr. Dhadwal sees patients Monday-Thursday in Sebastian, and on Fridays in Vero Beach. Same-day Friday appointments are available in Vero Beach.

For your appointment, call 772-581-8246.

#### Two locations:

13855 U.S. Highway 1, Suite 4  
Sebastian, FL 32958

1255 37th Street, Suite C  
Vero Beach, FL 32960



**Sebastian River  
Medical Group**

SebastianRiverMedicalGroup.com

Member of the Medical Staff of Sebastian River Medical Center

## Riverside Theatre DISTINGUISHED LECTURER SERIES

VERO'S PREMIERE SPEAKER SERIES

*Offering Diversity and  
Perspective on National  
and Global Affairs*

Lectures at 4 p.m. and 6 p.m.  
Reception with speaker  
between lectures

**FOR TICKET  
AVAILABILITY  
CALL THE BOX OFFICE  
772-231-6990**

3250 Riverside Park Drive  
Vero Beach, FL 32963

For more information, visit  
[www.RiversideLecturerSeries.com](http://www.RiversideLecturerSeries.com)

**Vero's PREMIERE Lecturer Series  
is proud to have welcomed over  
70 distinguished lecturers over  
the past 19 years, including:**

Cory Booker	Charles Krauthammer
Erskine Bowles	Larry Kudlow
David Brooks	Pres. Perrez Musharraf
Pres. George W. Bush	Sec'y Leon Panetta
Dick Cheney	General Colin Powell
Gov. Mitch Daniels	Condoleezza Rice
Niall Ferguson	Gov. Mitt Romney
Sec'y Robert Gates	Dennis Ross
Walter Isaacson	Dr. Fareed Zakaria

### 2017 Featured Speakers

**January 23, 2017**

**ARTHUR BROOKS**

*President of the  
American Enterprise Institute*

This economist and best-selling author explains why the conventional wisdom about capitalism is precisely backwards, and how each of us can fight to share the fruits of free enterprise with poor and vulnerable people.



**February 6, 2017**

**BOB WOODWARD**

*Legendary Pulitzer Prize-winning  
Journalist/Author and Associate  
Editor, The Washington Post*

The most famous political investigative reporter in America and two-time Pulitzer Prize winner will provide a behind-the-scenes look at the inner workings of government, politics and the role of leadership.



**February 20, 2017**

**JAMES BALOG**

*Internationally acclaimed  
environmental photographer  
Founder and Director, Earth Vision  
Institute and Extreme Ice Survey*

Subject of the Emmy-award winning film *Chasing Ice*, this visionary photographer, scientist, and globe-trotting adventurer will share imagery and insights that reveal how humanity is re-shaping the natural world.



**March 13, 2017**

**SIR SALMAN RUSHDIE**

*One of the Most Celebrated  
Writers of Our Time*

In this talk, Salman Rushdie discusses fundamental freedoms and the attack they face both from religious extremism and from political correctness.





**Saturday  
September 24  
10AM-2PM**



**A cultural showcase sponsored by the  
Cultural Council of Indian River County.**

# STUDENT SERIES **AUDITIONS**



**Suggested Ages:** 10 & UP  
**Audition Date:** OCT 8 10:00am - 12:00pm  
**To Audition:** Prepare 16 measures of a song acapella (preferably from an up-tempo musical). You may also be taught a section of music from *Elf Jr* to sing and a small dance, and maybe a little reading from the script.  
**Rehearsals:** Fridays, 4:00 - 8:00pm starting OCT 14  
**Performances:** DEC 9 - 10  
**Tuition:** \$150 (Reduced to \$50 if enrolled in the DEC Workshops)

**FRIDAY PERFORMANCES ARE AT 7:30PM  
SATURDAY PERFORMANCES ARE AT 1:30PM & 4:00PM**

  
*Sea Turtle*

**REAL ESTATE**

**WHERE COASTAL LIFE BEGINS**

Main Office: 772-222-5215  
664 Azalea Lane at State Road A1A Vero Beach, Florida  
[www.SeaTurtleRE.com](http://www.SeaTurtleRE.com)

# PROFESSIONAL FAMILY SERIES

**What happens when Stanley Lambchop is flattened and can slide under doors? Find out in this new musical based on the classic children's book.**



**SEPTEMBER 30  
& OCTOBER 1  
OCTOBER 7 - 8**



Students rehearse their blocking.

This Fall, I am very excited that our students will be performing the show *The Witches*. This is based on the classic Roald Dahl book and it's a show I've been wanting us to do for years. I am a giant fan of Roald Dahl and voraciously read all his books when I was a kid. He, of course, is the author of such classic stories as *Charlie and the Chocolate Factory*, *James and the Giant Peach*, *Matilda*, and *The Fantastic Mr. Fox*.

*The Witches* is one of Dahl's lesser known books, but still contains all the delicious dark humor for which he is known. The book was first published in 1983 and concerns a young boy and his grandmother, who stumble onto a convention of witches while they are on vacation. When the boy hears of their plan to turn all of the children of England into mice, he tries to thwart it but is turned into a mouse himself. The rest of the story deals with his misadventures as he tries to defeat the witches. The book was turned into a terrific movie in 1990 produced by Jim Henson (another hero of mine) and starring Anjelica Huston as The Grand High Witch.



STUDENT SERIES  
OCT 14 & 15  
Directed by Kevin Quillinan



This is a great show for our students to tackle because there are many challenges to putting it on. There will be a little puppetry and a lot of stage magic needed to help tell this story. The kids also have opportunities to play characters out of their comfort zone, especially all of the witches. Telling a story like Roald Dahl's is always tricky because there's a lot of strange twists and turns they take, and shows a much darker sense of humor than children's literature traditionally does. But this is a perfect show for our students to delve deeper into their acting, and a very suitable time of year for it to be produced!

YOUTH EDUCATION

STIMULATING  
THEATRE ARTS  
WORKSHOPS



Whether your child's interest is in Singing, Acting, Dancing, Directing, or even Technical, each Theatre Arts Workshop will feature new age appropriate experiences, topics, and skills.

SESSION 2 FESTIVAL OF TREES

HOLIDAY WORKSHOP

NOVEMBER 7 - 17

Monday - Thursday 4:00 - 6:00pm

Performances NOVEMBER 18 - 20

FOR MORE WORKSHOP INFORMATION VISIT THE WEBSITE



# So much to do...

# Some suggestions for you!

## SEPTEMBER

- 2** 5:00 – 8:00p  
MSVB\* First Friday  
Gallery Stroll on 14th Ave
- 3** 8:00a  
OBA\* Farmers Market  
on Ocean Drive
- 2** 6:30 – 9:30p  
FREE Live in the Loop
- 3** Concert Series  
7:30p & 9:30p  
HOWL AT THE MOON  
EXPERIENCE
- 9** 6:30 – 9:30p  
FREE Live in the Loop
- 10** Concert Series  
7:30p & 9:30p  
Comedy Zone



- 23** 6:30 – 9:30p  
FREE Live in the Loop
- 24** Concert Series  
7:30p & 9:30p  
Comedy Zone  
OKTOBERFEST

- 24** 8:00a  
OBA\* Farmers Market on  
Ocean Drive
- 10:00a – 4:00p**  
Celebrate the Arts

- 30** 6:00p  
MSVB\* Downtown  
Friday Night on 14th Ave
- 7:30p**



PROFESSIONAL FAMILY  
SERIES

- 30** 6:30 – 9:30p  
FREE Live in the Loop
- 1** Concert Series  
7:30p & 9:30p  
HOWL AT THE MOON  
EXPERIENCE

## OCTOBER

- 1** 8:00a  
OBA\* Farmers Market  
on Ocean Drive
- 1:30p & 4:00p**  
The Musical Adventures  
of Flat Stanley TYA  
PROFESSIONAL FAMILY  
SERIES

- 7** 5:00 – 8:00p  
MSVB\* First Friday  
Gallery Stroll on 14th Ave
- 7:30p**  
The Musical Adventures  
of Flat Stanley TYA  
PROFESSIONAL FAMILY  
SERIES

- 7** 6:30 – 9:30p  
FREE Live in the Loop
- 8** Concert Series  
7:30p & 9:30p  
Comedy Zone  
OKTOBERFEST

- 8** 8:00a  
OBA\* Farmers Market  
on Ocean Drive
- 1:30p & 4:00p**  
The Musical Adventures  
of Flat Stanley TYA  
PROFESSIONAL  
FAMILY SERIES
- 5:30 – 8:30p**  
OBA\* Sunset Saturday  
Night at Humiston Park

- 14** 7:30p



- 14** 6:30 – 9:30p  
FREE Live in the Loop
- 15** Concert Series  
7:30p & 9:30p  
HOWL AT THE MOON  
EXPERIENCE

- 15** 8:00a  
OBA\* Farmers Market  
on Ocean Drive
- 1:30p & 4:00p**  
The Witches  
STUDENT SERIES

- 21** 6:30 – 9:30p  
FREE Live in the Loop
- 22** Concert Series  
7:30p & 9:30p  
Comedy Zone  
OKTOBERFEST

- 22** 8:00a  
OBA\* Farmers Market  
on Ocean Drive

- 25** 8:00p  
OPENING
- ## RING OF FIRE
- THE MUSIC OF JOHNNY CASH

- 26** 2:00p & 7:30p  
Ring of Fire

- 27** 7:30p  
Ring of Fire

- 28** 6:00p  
MSVB\* Downtown  
Friday Night on 14th Ave
- 8:00p**  
Ring of Fire

- 28** 6:30 – 9:30p  
FREE Live in the Loop
- 29** Concert Series  
7:30p & 9:30p  
HOWL AT THE MOON  
EXPERIENCE

- 29** 8:00a  
OBA\* Farmers Market  
on Ocean Drive
- 2:00p & 8:00p**  
Ring of Fire

- 30** 2:00p  
Ring of Fire

## NOVEMBER

- 2** 2:00p & 7:30p  
Ring of Fire

- 3**
- 4** 5:00 – 8:00p  
MSVB\* First Friday  
Gallery Stroll on 14th Ave
- 8:00p**  
Ring of Fire

- 5** 8:00a  
OBA\* Farmers Market  
on Ocean Drive
- 2:00p & 8:00p**  
Ring of Fire

- 6** 2:00p  
Ring of Fire

- 8** 7:30p  
Ring of Fire

- 9** 2:00p & 7:30p  
Ring of Fire

- 10** 7:30p  
Ring of Fire

- 11** 6:30 – 9:30p  
FREE Live in the Loop
- 12** Concert Series  
7:30p & 9:30p  
Comedy Zone  
WINTER NIGHTS



- 8:00p**  
Ring of Fire

- 12** 8:00a  
OBA\* Farmers Market  
on Ocean Drive
- 5:30 – 8:30p**  
OBA\* Sunset Saturday  
Night at Humiston Park
- 2:00p & 8:00p**  
Ring of Fire

- 13** 2:00p  
Ring of Fire  
CLOSING

- 15** 11:30a  
Friends Fall Luncheon  
with David Pittsinger
- 7:30p**  
An Evening with  
David Pittsinger

- 17** 7:30p  
An Evening with  
David Pittsinger

- 18** 6:00p  
Gala Preview  
Festival of Trees

- 19** 8:00a  
OBA\* Farmers Market  
on Ocean Drive
- 10:00a – 5:00p**  
Festival of Trees  
Showcase



- 4:00 – 8:00p**  
Family Night  
Festival of Trees
- 6:30 – 9:30p**  
OBA\* Sunset Saturday  
Night

- 20** 8:30 & 10:30a  
Breakfast with  
Santa

- 10:00a – 5:00p**  
Festival of Trees  
Showcase

- 25** 6:00p  
MSVB\* Downtown  
Friday Night on 14th Ave

- 26** 8:00a  
OBA\* Farmers Market  
on Ocean Drive

- \*VBMA  
Vero Beach Museum of Art
- \*MSVB  
Main Street Vero Beach
- \*OBA  
Oceanside Business Association

*Sin is in*



# CHICAGO

**THE MUSICAL**

*Music by John Kander Lyrics by Fred Ebb Book by Fred Ebb, Bob Fosse Based on the play, Chicago, by Maurine Dallas Watkins*

PRESENTING SPONSOR Laura and Bill Frick

**JANUARY 3-22**

772-231-6990 • [RIVERSIDETHEATRE.COM](http://RIVERSIDETHEATRE.COM)  
3250 RIVERSIDE PARK DRIVE VERO BEACH, FL 32963